

CONFIDENTIAL



Hegemony  
Diplomatic  
Corps

343-34/6444890-1

# Hegemony Diplomatic Corps

Species Report: Kresz (343-34/6444890-1)

Eyes only: Troels Volmar, Comptroller Hegemony  
Diplomatic Corps

## **Report on interrogation of Kresz subjects – document #88(0)-1**

Following the covert capture of the Kresz deeprange vessel *Might of Gnow*, a full interrogation of survivors was undertaken.

The species physiology is highly compartmentalised, able to survive significant amputation and damage short of major trauma to the head or torso. As a result physical torture was limited in efficacy, with better results afforded through full-spectrum psychotropic drugs augmented by cephalic probes.

None of the subjects survived. The following report covers a number of aspects of the Kresz civilisation.

### **1. Creation myth and associated beliefs**

The Kresz believe that their homeworld was drawn from their primary sun by *Sakat*, which trink tech translated as “god of death” with a 78% accuracy rating. Sakat moulded the sun-stuff into a ball and placed it in orbit. The sun-stuff cooled and solidified, but its atmosphere was poisonous so nothing could grow or live on it. It was locked in this form, unchanging, until Sakat moved across the face of the world and sucked all the poisons from it. Where Sakat passed, life sprang up, and Sakat was pleased, because without life there can be no death. This legendary act by Sakat seems to have had a significant effect on the Kresz psyche, setting up a powerful relationship between cleansing, life and death. The Kresz believe that the first life was very simple, and as it grew and prospered, it changed and gave rise to more complex forms.

After many thousands of years passed, the first Kresz sprang up on the planet. As these proto-Kresz grew and differentiated, Sakat cut down those that were deformed or otherwise weakened so the Kresz would become stronger and stronger. In this way the Kresz

stumbled upon a faith-based theory of evolution.

It was the prophet Tlonat who divined Sakat's purpose over 5000 standard years ago. Tlonat believed that as each new form of life was born more complex than the previous, Sakat had set the world on a path to develop perfect living organisms which would be free from disease, all-wise and all-powerful. It followed that the Kresz, as the only sentient species existing, were to be the fulfilment of that goal, so to ensure they continued to develop as a strong race they took on the work of Sakat. They killed any Kresz born deformed because this was an indication that those individuals were unfit. Likewise the sick or injured were left to either recover or die "at the will of Sakat". As a result the Kresz never developed any form of medicine or healers. The fact that they seem amazingly resistant to a range of disease pathogens (as released on test subjects) points to a genetic advantage gained as a result of thousands of years of careful selection. Euthanasia is practised as a matter of course in modern Kresz society. The advent of the communion (see section 4: *Language*) is seen by the majority as further proof of the divine evolution of the Kresz species.

As a side note: this also explains their insular nature. Kresz do not seek out alien contact because they see alien life as "not on the path of Sakat" and therefore unable to become perfect beings.

This striving for perfection also finds its way into the reproductive habits of Kresz. For a full report on this aspect see section 2: *Social structure and politics* and section 3: *Physiology and sexual reproduction*. Once a Kresz foetus has been initiated, the hierarch of the house visits the female and introduces a string of his own DNA into the partially fertilised egg. The child then has donor DNA from the father, the mother and the hierarch. This is believed to give the child a genetic advantage because the hierarch, as leader, is seen as the most perfect Kresz of that generation. The hierarch insemination is also necessary as a determinant of the caste, or body type, that the child will inherit. It is said that the hierarch has a degree of control over this, although the exact mechanism is not known as no hierarch was present amongst the test subjects.

This belief in evolutionary perfection and euthanasia could provide valuable leverage for HDC operations. Further analysis is recommended.

## 2. Social structure and politics

Kresz society is a strictly ordered hierarchy in which social standing depends on a mixture of function and lineage.

There are six houses to which all Kresz belong by virtue of birth. These six houses own the entire landmass of the homeworld, with the exception of the capital city of Aktiuk and its surroundings which was deemed neutral territory during the first of the house wars 3500 standard years ago. As well as the six houses, there are also six lodges representing the main streams of employment in Kresz society. This means that the normal citizen will be represented by their house hierarch, on the grounds of their familial connection, and by their lodge dean by virtue of their profession.

The hierarch of each house and the dean of each lodge holds a seat on the council, which is the ruling body for the Kresz people. Leadership of the council rotates regularly between the houses and lodges. Each house and lodge also has its own internal council which advises the hierarch or lodge dean on matters and assists in the administration of house/lodge affairs.

The Kresz hierarchy is organised along the following lines:

1. House hierarchs, lodge deans and their functionaries
2. Scholars
3. Adepts: professional disciplines such as scientists, lawyers, administrators
4. Cultivators: agents of agriculture and fishing
5. Merchants: agents of manufacturing and commerce
6. Priests
7. Defenders

The six lodges are consequently Scholars, Adepts, Cultivators, Merchants, Lodge of Sakat (which comprises the priesthood) and Defenders (official name of the warrior lodge).

The six houses and their hierarchs are:

*Kergis*. The Kergis hierarch holds the title of protector and commands the combined Kresz armies and fleets in war.

*Ukat*.

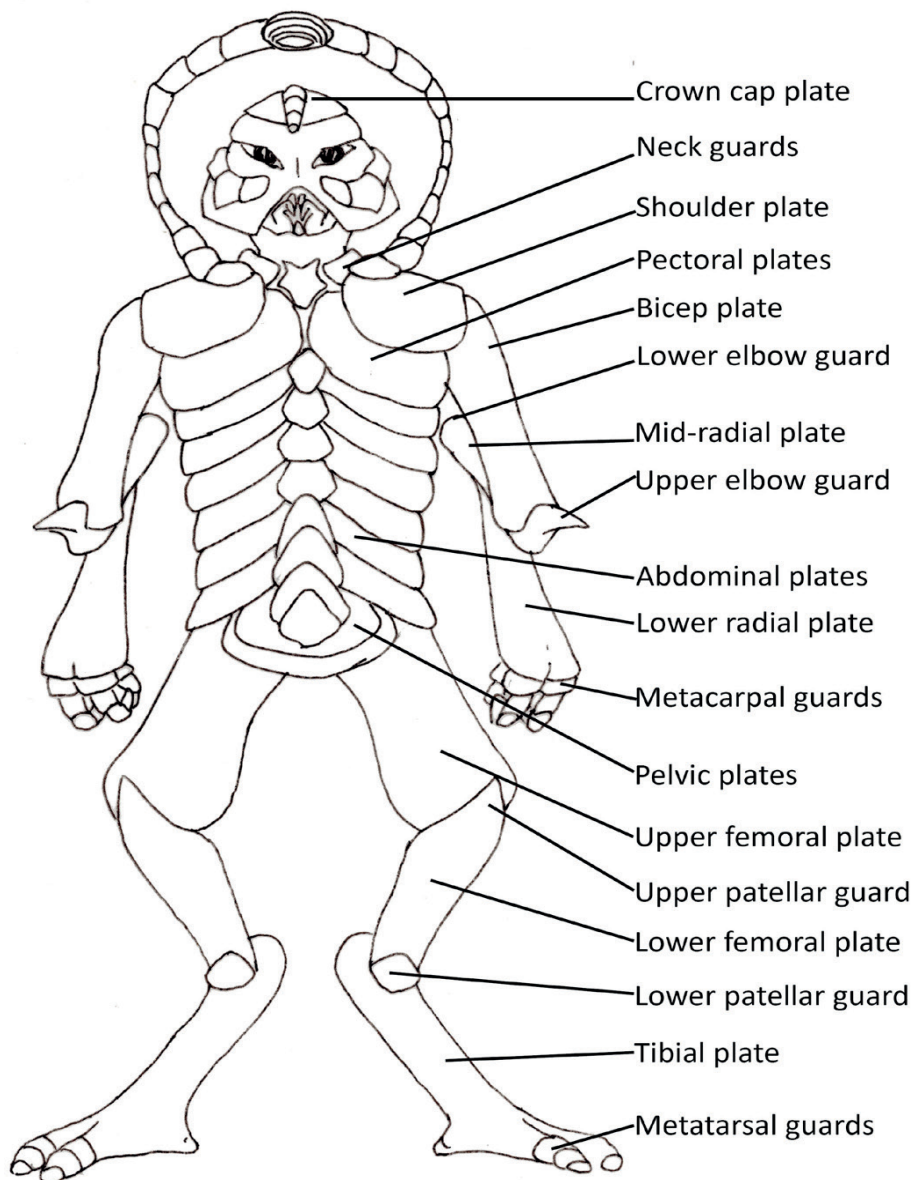
*Akczek*. The Akczek hierarch controls lands with an abundance of gemstones and precious metals; consequently they have much to do with the Merchants Lodge and strong ties with the military.

Czerag.  
Haketiug.  
Dageru.

There is a small underclass of criminals, who after repeat offences have their mantle surgically removed (see section 3: *Physiology and sexual reproduction* for further information) and are banished from Kresz society into the desert wildernesses to die.

Kresz body types differentiate according to function, which is determined by the hierarch on secondary insemination (see section 3: *Physiology and sexual reproduction*).

### 3. Physiology and sexual reproduction



*Typical armour arrangement (non-Defender)*

Kresz males stand on average 2.8m tall. The females are generally larger, averaging 3m. The exception to this is Kresz that differentiate as Defenders. Both Defender males and females average 3.5m. Merchant class are shorter. Cultivators have longer arms that extend to the ground, the upper body and arms being more ridged and less smooth than other castes. Further information will be supplied when more test subjects are available.

The Kresz homeworld has a gravity equivalent to 1.4 terrestrial standard gravities. Consequently the Kresz have both an endo- and exoskeleton. The endoskeleton is composed predominantly of calcium, while the exoskeleton is chitinous in nature, and continues to thicken and change colour throughout the life of the Kresz.

The chitin forms a series of interlocking and overlapping plates over a tough scaly hide which is completely covered by the chitin, in effect forming a living armour. Tests demonstrated the chitin of a fully grown Kresz is effective at deflecting small-arms fire and diffusing energy weapons up to and including level three.

The Kresz foot is akin to a terrestrial dromedary possessing two toes which spread flat as pressure is applied. Much of their homeworld is desert, and it is thought that this affected Kresz evolution significantly. As further proof, the eye is complex but possesses two eyelids: one fleshy; the other of clear cartilage which not only provides protection from sandstorms but is shaped to provide an additional lens that enhances visual contrast and distance vision.

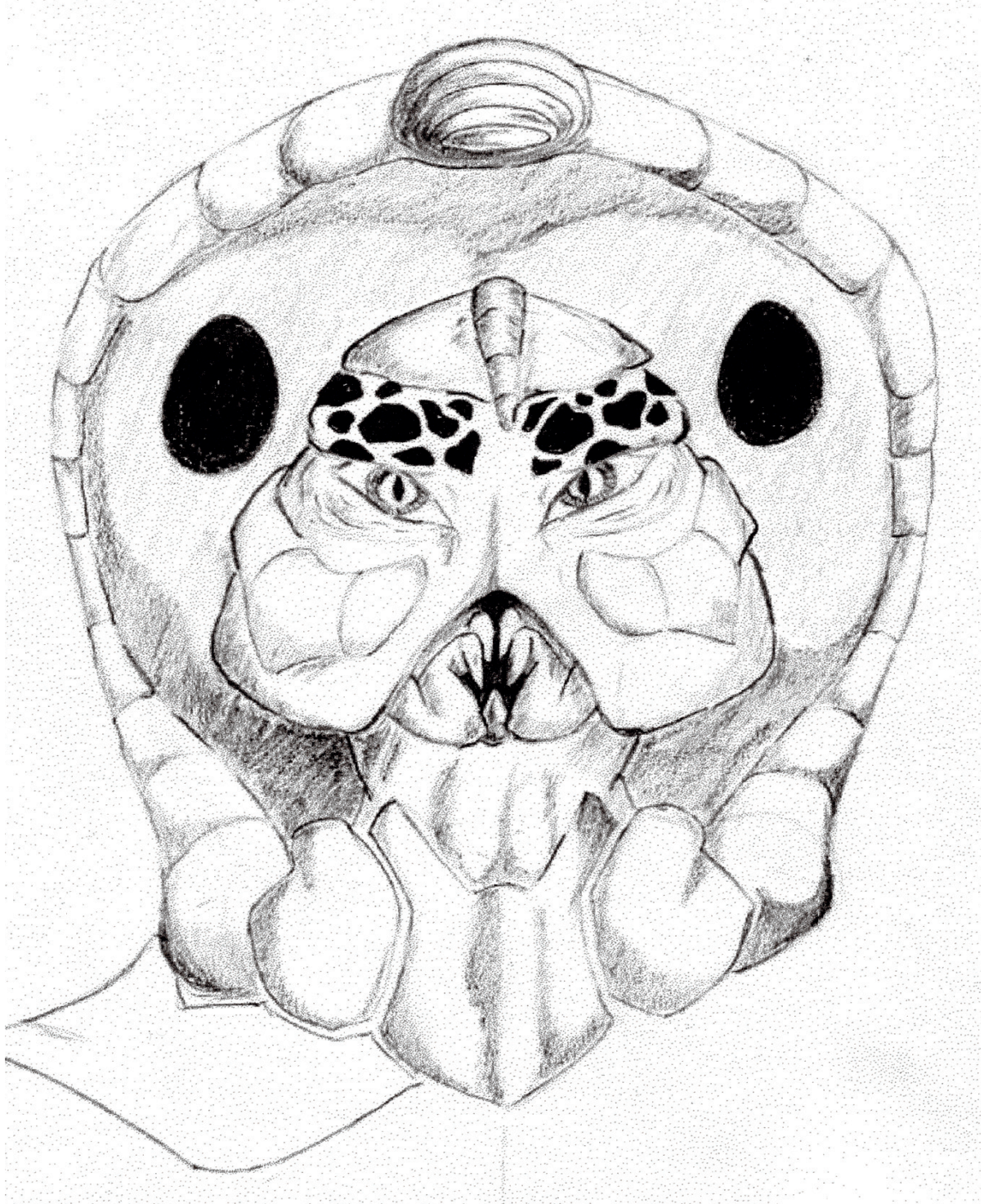
The Kresz leg has two opposing knee joints, the upper much like a human knee and the lower canted towards the rear as in terrestrial birds. Musculature running under the chitin is well-developed and subjects demonstrated an ability to jump up to 4 metres vertically and 10 metres horizontally under extreme circumstances. Bipedal in nature, the Kresz's pelvis and vertebrae are similar to human forms, however the arms have a double elbow in the same arrangement as the leg joints. Consequently both the arms and legs are significantly longer in proportion to the rest of the body than in humans.

Kresz hands possess two clawed fingers arranged opposite an opposable thumb. This is believed to be the reason for their base six numbering system (see section 5: *Numbering and time systems*).

The Kresz mouth most closely resembles that of a terrestrial



crab with a number of overlapping jointed feelers. The various mouth parts have a number of different functions including feeding, olfactory and taste sensors, and verbal communication.



*Kresz appearance (with mantle engorged)*

## **Internal organs**

Internally Kresz share much with insect-type creatures. Kresz breathe a mixture of gases within terrestrial tolerances but they breathe through spiracles: tiny tube-like structures in the secondary hide.

The Kresz lungs, fed by air intake through the spiracles, have more in common with the book-lung structure of terrestrial locusts. Oxygenated fluid is pumped through the lungs to the extremities by a number of independent “hearts”, six in all: two in the chest, two in each upper arm, and two in each thigh. These can independently shut down to restrict fluid loss following major trauma; e.g. the loss of a limb.

Their excretory systems bear out this resemblance to insects and their early evolution in a desert environment. Various reabsorptive functions, such as volume reduction, regulation of individual electrolytes, adjustment of osmotic concentration and pH regulation, which are associated with distinct renal segments in the mammalian kidney all occur simultaneously in the rectum of the Kresz.

## **The Kresz mantle**

The mantle, or hood, is a unique organ never before encountered by HDC. It is a fleshy cape-like organ which hangs from the shoulders and covers the upper back of the Kresz. When engorged it inflates behind the head of the Kresz and resembles a terrestrial cobra-hood. It is an extra-sensory organ which allows the Kresz to “pick up” on the empathic state of other Kresz nearby. The Kresz worldmind and “communion” that has resulted was described by subjects as a gestalt experience; however, the Kresz do not appear to share a hive-mind mentality.

The mantle has an older function which pre-dates what the Kresz call “the Emergence”. Over short distances it can concentrate and loose electromagnetic energy which appears to have offensive potential. Further investigation of this function is required as a priority when additional test subjects are supplied. A risk advisory has been dispatched to Fleet Command.

## **Sexual reproduction**

Despite the insect-like features of the Kresz physiology, reproduction is similar to mammalian reproduction with insemination of an ovum in the female by the introduction of male sperm following



penetrative sexual intercourse. Prior to intercourse the female produces a chemical which acts as a pheromone to the male and also softens the chitinous covering to her sexual organs. The pheromone provokes a cascade of chemical changes in the male also, softening the chitin that protects his sexual organs and enabling penetrative intercourse to ensue.

As mentioned above, fertilisation of the egg is a two-fold process. Initial fertilisation is by the chosen male, but the differentiation of the ovum will not progress past a certain point until the introduction of a second set of sperm by the house hierarch. This sperm contains the information to enable the fertilised ovum to differentiate into a particular caste or body shape. Subjects indicated that the hierarch can consciously control the type of sperm he produces in order to choose the caste of the ensuing child.

#### 4. Language

The Kresz language is relatively standard in structure and syntax. But by Hegemony standards it is fairly blunt and basic with a limited set of phonemes:

a	b	c	d	e
ad   ag   ah   ak   al   ar   as   at   az	bv	cz (ch)	da   de   di   dj (ji)	e/eh   el   ek   er   es
g	h	i	k	l
ga   ge   gi   gu	ha   he   hi   hu	id   ig   ik   il   ir   is	k   ka   ke   ki   kl   kr   ku	la   le   lok/luk
r	s	t	u	z
ra   re / reee  ri   ru	sa   se   sg   si   sk   st   su   sz (sh)	te   ti   Tz (ts)   tu	ud   ug   uk   ul   un   ur   ut	z   za   ze   zi   zr   zu

Yet the Kresz social structure and civilisation appears to be as complex as many others we have encountered. The reason for this variance is believed to be due to the existence of the Kresz empathic sense. Consequently nuances which in Earth society would be expressed in language are communicated through empathic means in Kresz.

### 5. Numbering and time systems

The Kresz use a senary (base six) numbering system. Terrestrial equivalents include ancient Sumerian.

#### Base 10

100,000s	10,000s	1000s	100s	10s	Units
----------	---------	-------	------	-----	-------

#### Base 6

7776s	1296s	216s	36s	6s	Units
-------	-------	------	-----	----	-------

Their language expresses numbers as compound phrases, so where

0	=	ri
1	=	ek
2	=	sa
3	=	alak
4	=	ruz
5	=	djah

a number such as  $154_6$  is expressed as ek'dva'ruz.

36s	6s	Units	
1	5	4	$= (1 \times 36) + (5 \times 6) + (4 \times 1) = 70_{10}$

The Kresz time system varies markedly from Hegemony Standard, relying as it does on the Kresz numbering system and the diurnal and annual motion of their homeworld.

Kresz Time Periods			Heg Time Equivalent	
1	"second"	=	0.6	seconds
1	"minute"	=	0.36	minutes

1	“hour”	=	1.296	hours
1	“day”	=	1.944	days
1	“week”	=	1.666	weeks
1	“month”	=	2.499	months
1	“year”	=	1.2497	years

The Kresz “year” or cycle, which is the closest translation available for this time period, is based on one rotation of the homeworld around their trio of suns.

The year contains six distinct seasons which correspond roughly to the six month divisions.

## **6. Technological index**

The Kresz species is space-faring and possesses a form of Voss Space drive – though the term they use is tenspace. Their world is serviced by a beanpole-type space elevator. While their technology is equivalent to late 21<sup>st</sup> century terrestrial, they have access to more advanced technology through local trading partners (see section 8), including limited access to gravitic generators.

## **7. Military potential**

Although proud of their war-like past, the Kresz lack easy access to technology equivalent to that of the Hegemony which means they are not considered a military threat. The empathic bond they share could be exploited in a combat scenario, and is the reason why wars and violent crime have all but died out on their planet.

## **8. Contact with other species**

While the Kresz are an insular species they have limited trade arrangements with a number of other alien species in a nearby area of space called “the Lenticular”. Little was known of these other species by the subjects interrogated. Further intelligence on the Lenticular is required.

## **Jang Hollis**

Diplomatic Corps Information Exchange Officer